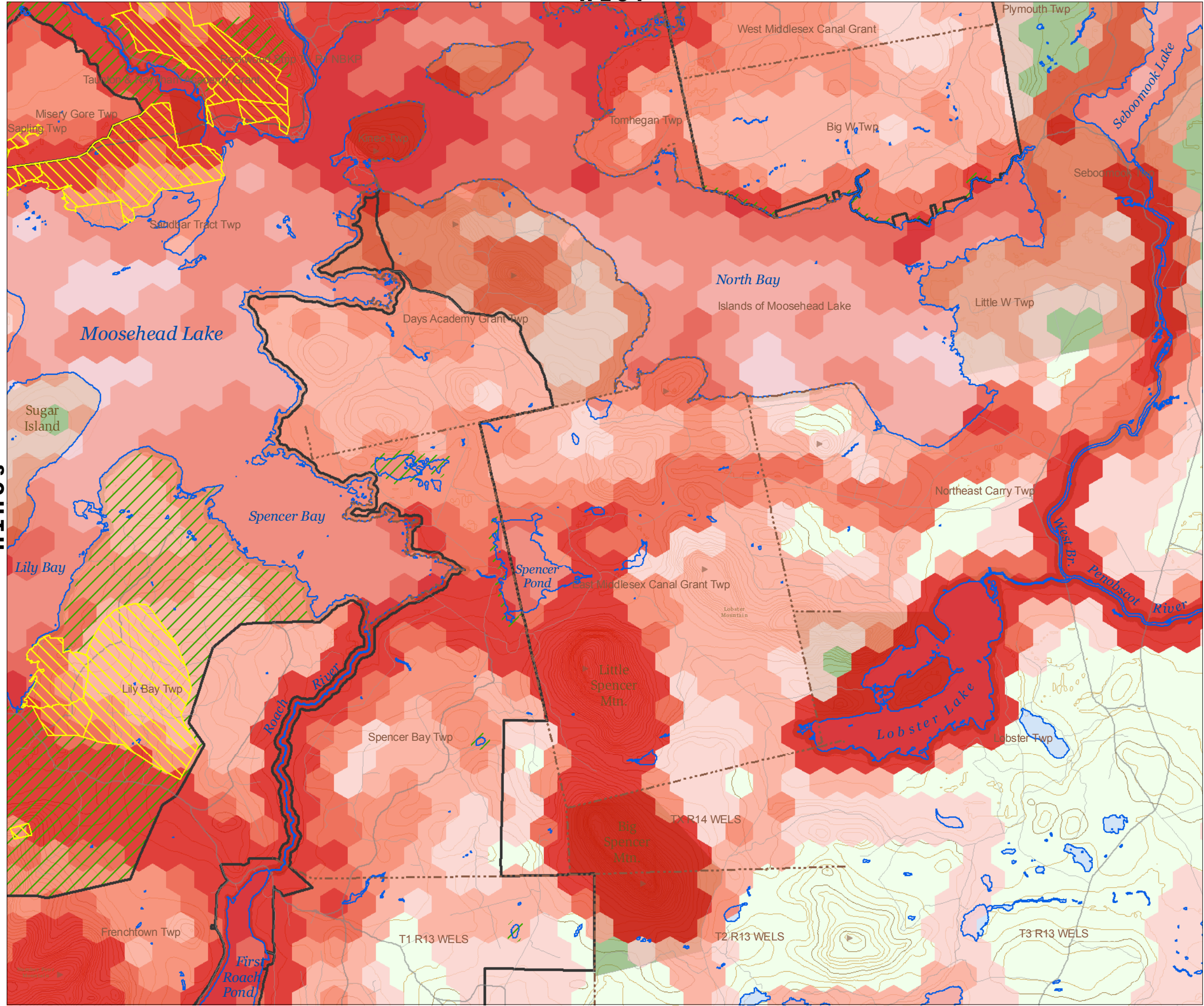


WEST



Moosehead Participatory GIS & Community Values Mapping

Public Lands and Recreation Areas North of Lilly Bay Peninsula Composite-All Responses

- Relative Value**
(Percentile/Count of Areas Identified)
- 81%-100%/n = 10 - 44
 - 61%-80%/n = 7 - 9
 - 41%-60%/n = 4 - 6
 - 21%-40%/n = 2 - 3
 - 1%-20%/n = 1

(Map Summarizes feedback provided by 35 of 35 respondents)

August 23, 2007

Map is rotated 90° so that North is page right.

- Plum Creek Proposed Development Areas
- Conservation Framework
- Balance Conservation Easement

- Mountains
- Lakes
- Conservation land
- Roads
- 60 foot contours
- Town boundaries

